





36 200 819



- Drehumstellung
- Rosette Ø 60 mm

|   |                                       |               |
|---|---------------------------------------|---------------|
|  | Chrom                                 | 36 200 819-00 |
|  | Platin gebürstet                      | 36 200 819-06 |
|  | Dark Chrome                           | 36 200 819-19 |
|  | Messing gebürstet<br>(23kt Gold)      | 36 200 819-28 |
|  | Bronze gebürstet                      | 36 200 819-42 |
|  | Champagne<br>gebürstet (22kt<br>Gold) | 36 200 819-46 |
|  | Champagne (22kt<br>Gold)              | 36 200 819-47 |
|  | Dark Platinum<br>gebürstet            | 36 200 819-99 |

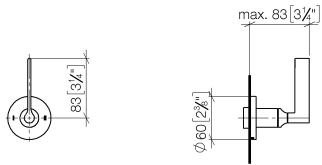
**Benötigtes Zubehör**



- UP-Zweiwege-Umstellung -** 35 202 970 90
- Max. Einbautiefe 160 mm
  - Min. Einbautiefe 85 mm

36 200 819

mm [inches]



### Durchflussdiagramm

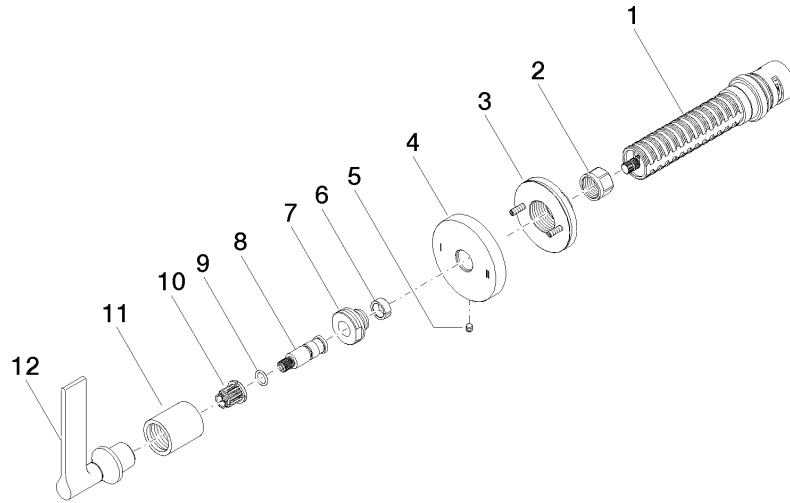


### Zertifikate

LGA\_38379.

WRAS\_2307045.

36 200 819



### Ersatzteilstückliste

| Nr. | Artikelnummer      | Benennung  | Verbaumenge | Lieferzeit |
|-----|--------------------|------------|-------------|------------|
| 1   | 90 90 03 304 10 90 | Umstellung | 1           | 2          |
| 2   | 90 23 30 023 00 90 | Mutter     | 1           | 2          |
| 3   | 90 21 02 181 00 90 | Scheibe    | 1           | 2          |
| 4   | 09 27 89 118-00    | Rosette    | 1           | 10         |
| 5   | 09 31 11 294 90    | Stift      | 1           | 2          |
| 6   | 90 14 15 020 03 90 | Ring       | 1           | 2          |
| 7   | 09 24 05 002 90    | Nippel     | 1           | 2          |
| 8   | 09 29 06 022 90    | Spindel    | 1           | 2          |
| 9   | 90 14 10 060 00 90 | Dichtung   | 1           | 2          |
| 10  | 90 12 12 002 00 90 | Rastbuchse | 1           | 2          |
| 11  | 09 21 02 070-00    | Haube      | 1           | 10         |
| 12  | 90 20 80 015 01-00 | Griff      | 1           | 10         |